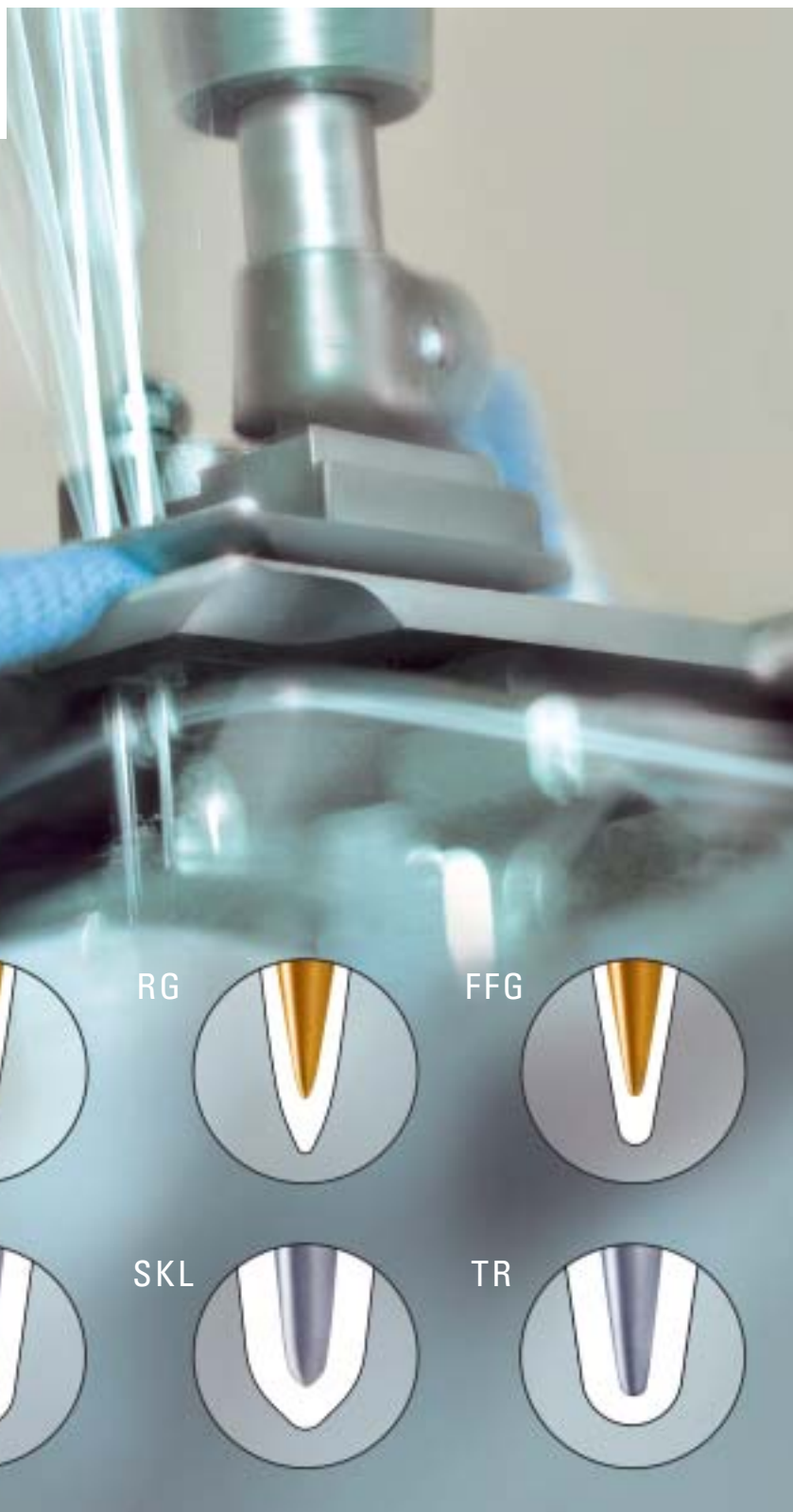




GROZ-BECKERT
CLOTH POINTS



RS



R



RG



FFG



FG



G



SKL



TR



All textiles, whether woven, warped, felted or knitted, are sewn with a specific needle point shape to suit their structure.

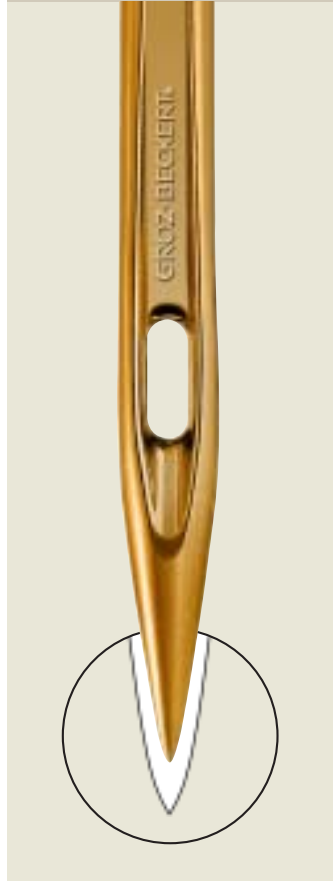
The right choice of point has a significant effect on the finished sewing results. The right needle tip will give you the tip-top results you want.

GROZ-BECKERT CLOTH POINTS

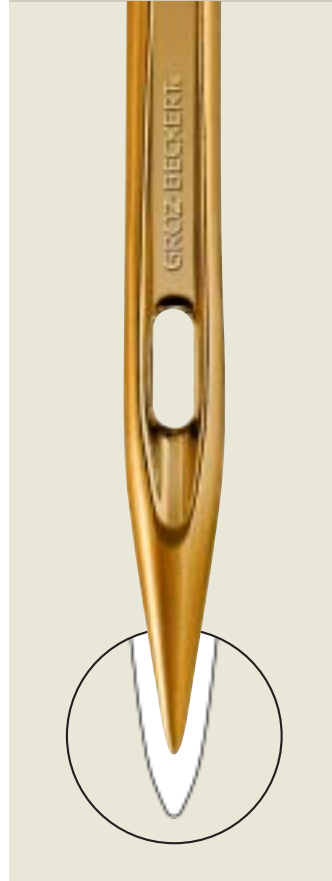
SPECIFICATIONS AND APPLICATIONS



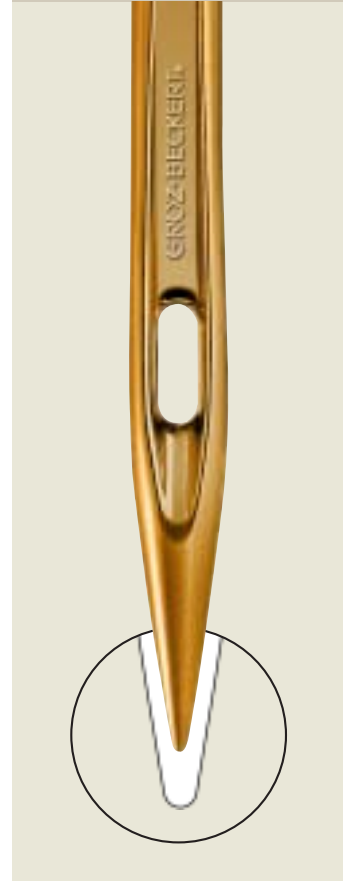
Standard for blindstitch needles. For precise stitch sequence in lockstitch operations susceptible to damage (sensitive point)



Most common for all kinds of lock stitch applications (FST 301), particularly for woven fabrics*, artificial leather, coated fabrics, * woven and felted denim



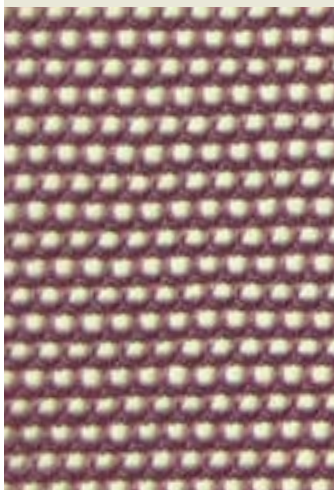
Highly recommended for all chainstich (FST 401) operations, for knitted fabrics microfibrres, button sewing, multiple-head embroidery, leather for garments



For knitted fabrics and for wovens

ALSO AVAILABLE IN GEBEDUR®

FG/SUK 



Recommended for highly elasticated fabrics with rubber or elastomeric contents

G 



For coarse and open structured elasticated fabrics

SKL 



For warped fabric knits with a high percentage of elastane (underwear)

TR 



Application in "Schiffli" embroidery for open structures like tulle and curtains

