

IMPORTANT SAFETY INSTRUCTIONS

When using your cutting machine, basic safety instructions should always be followed including the following:

This cutting machine is for commercial use only. Read all instructions before using.

DANGER--to reduce the risk of electric shock:

1. Do not install or store this machine in a wet location.

WARNING--to reduce the risk of burns, fire, electric shock, or injury to persons:

1. Use machine only for its intended use as a portable cutting machine.
2. Turn machine to "OFF"(O) before connecting or disconnecting power cord.
3. Connect this machine to a properly grounded outlet only. See Grounding Instructions.
4. Always disconnect electrical connector from machine when not using it, before servicing it, or changing blade.
5. Do not leave machine unattended while it is connected to power outlet.
6. Do not operate machine with a damaged cord or if machine has been dropped. Do not disassemble -- take to a qualified serviceman for repairs. Incorrect assembly can cause electric shock when the machine is used.
7. Keep hands and fingers away from blade and moving parts.
8. Keep guards in place and in working order,
9. The knife key and other wrenches must be removed from machine before starting the motor.
10. Keep ventilation openings of machine free from dust and lint.
11. Keep machine clean and blade sharp for best and safest performance.

SAVE THESE INSTRUCTIONS

GROUNDING INSTRUCTIONS

This machine must be grounded. In the event of malfunction or breakdown, grounding provides a path of least resistance for electric current to reduce the risk of electric shock. This machine is equipped with a Ground Shield surrounding the Terminal Pins; this Ground Shield is designed to be used with a Maimin Grounded Connector, part #458A or 458B. See Wiring instructions supplied with the Connector.

DANGER -- Improper connection of the Maimin Connector can result in a risk of electric shock. Check with a qualified electrician or service man if the grounding instructions are not completely understood or if in doubt as to whether the machine is properly grounded.

Do not modify the Ground Shield provided with this machine.

Use correct wire sizes with the Maimin Grounded Connector.

U.S.A. only: 1 Phase: Use AWG 16/3 SJ, SJT or SJE
3 Phase: Use AWG 16/4 SJ, SJT or SJE

International: 1 P+N+: Use 3X1, 0mm CEE (2) 61
3 P+: Use 4X1, 0mm CEE (2) 61

H. Maimin Co., Inc. P.O. Box 549 Route 341 Kent, CT 06757 U.S.A.

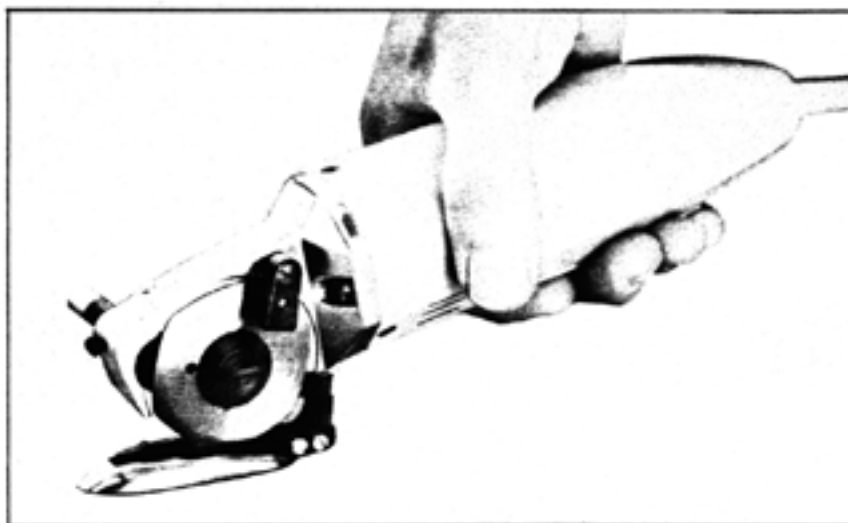
Printed in U.S.A.

MAIMIN

MINI-SHERE

SERIAL NOS. M1 OR M2 — 13000 & UP

INSTRUCTIONS & PARTS LIST



I. DESCRIPTION

1-1 GENERAL

The Maimin Mini-Shere electric shears is a compact, efficient tool for easily cutting various materials. The Mini-Shere uses a hexagonal knife with either a baseplate or a cutting guide for different cutting purposes as listed below. The front felt (10381) wipes a thin film of oil on the knife to reduce friction between the knife and the counter-cutting blade. Lubrication by the rear felt (10390) behind the knife greatly increases life of the gear retainer (10313) and improves the cutting action.

1-2 KNIFE

The hexagonal knife (30312) is excellent for cutting all materials such as cloth, synthetics, leather, and plastics.

1-3 BASEPLATE/CUTTING GUIDE

- The baseplate (10345) is used for general cutting.
- The cutting guide (10340) is used for trimming, angle cutting, and slitting or cutting knitwear.

II. OPERATION

2-1 TO START

Connect male plug at end of power supply cable to electrical outlet of same voltage as stamped on nameplate. To operate machine, press switch lever (10411). Release lever to stop machine.

The Mini-Shere is double-insulated and requires no grounding. Therefore, it comes equipped with only a two wire electrical cord. The Stretch Mini-Shere is equipped with a three wire electrical cord as it is not double-insulated and must be grounded to the proper electrical outlet.

2-2 TO CUT

Maximum cutting height is 5/16" (8mm) but lays should be no higher than machine can cut without strain.

2-3 TO SHARPEN KNIFE

Press sharpener (10370) *lightly* for sharpener stone (10378) to grind rotating knife. Always keep knife sharp for clean, accurate cutting.

III. CARE & MAINTENANCE

3-1 MAINTENANCE SCHEDULE

- Daily: Use Mini-Shere oil (or good grade of 10 weight oil) to saturate front felt (10381) in front oiler. Also saturate rear felt (10390) whose oil hole is marked in back of gear case (10306).
- Weekly: Grease gears with Mini-Shere grease. Grease hole is in back of gear case (10306).
- Monthly: Blow out air inlets and outlets of motor. Always keep Mini-Shere free of dirt and grease.

3-2 TO CHANGE KNIFE

Pull oscillating oiler (10380) slightly outwards and swing it up and over the stop pin away from knife. Turn knife until its hole is opposite recess for sharpener, and insert a hex key into hole. Unscrew knife lock screw (10433) with screw driver. Lift knife out. Slip new knife between counter-cutting blade (10341) and cutting guide (10340), and seat it firmly on shoulder of gear (10310). Lock knife with knife lock screw, and reset oscillating oiler. Clean cutting requires counter-cutting blade brush only edge of knife.

3-3 TO CONVERT BASEPLATE TO CUTTING GUIDE

To expose the cutting guide (10340), remove the baseplate (10345) by unscrewing the two screws (10347) holding the baseplate to the cutting guide. Be careful to keep the two screws with the baseplate for reassembly later if desired.

3-4 TO CHANGE SHARPENING STONE

Remove knife then sharpening stone (10378) from shaft by unscrewing stone screw (10373). Insert new sharpening stone, and reassemble.

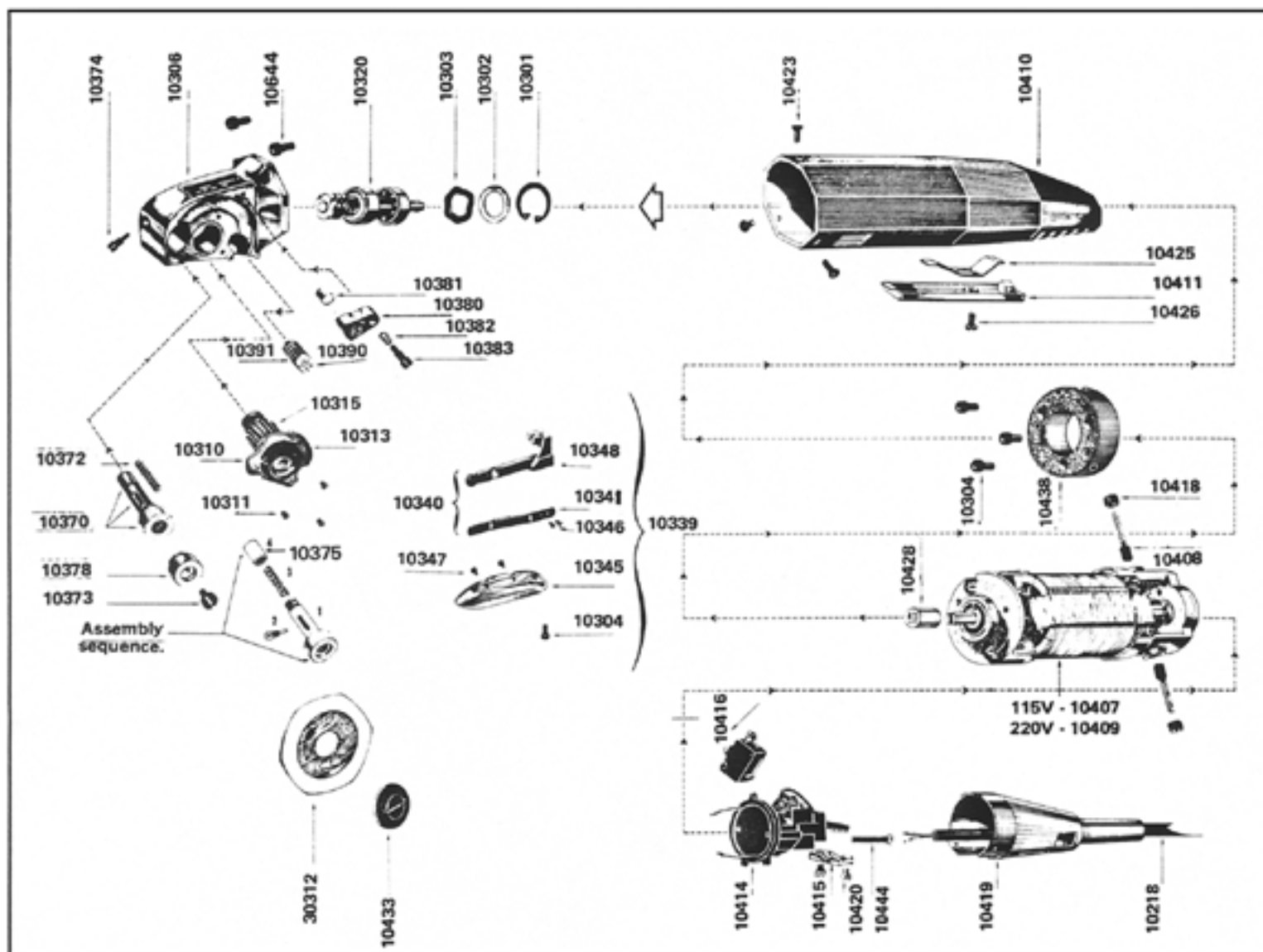
3-5 TO CHANGE CARBON BRUSHES

Check carbon brushes (10408) after 200 hours use. Using hex key (10440), remove the three screws (10423) holding motor case (10410). Slide off motor case. Remove brush caps (10418) from the exposed motor, and replace old carbon brushes.

CAUTION: Disconnect machine from electrical outlet before making adjustments or repairs!

SEE OTHER SIDE FOR PARTS LIST

MINI-SHERE PARTS LIST



Part No.	Description	Part No.	Description	Part No.	Description
10218	Power Supply Cable	10372	Spring	10438	Disc
10250	Motor Bearing, Front	10373	Stone Screw	10440	Hex Key M2 (for 10423)
10251	Motor Bearing, Back	10374	Shaft Screw	10441	Hex Key M3 (for 10304 & 10644)
10252	Armature, 110 v.	10375	Cap	10442	Oil
10255	Armature, 220 v.	10378	Sharpening Stone	10443	Grease
10301	Retaining Ring	10380	Front Oiler	10444	Screw M2.6 x 30 Cheese Hd.
10302	Washer	10381	Front Felt	10644	Screw M4 x 10 Cap
10303	Undulated Washer	10382	Spring	30312	Hexagonal Knife
10304	Screw M 4 x 8 Cap	10383	Shoulder Screw	STRETCH MINISHERE	
10306	Gear Case	10384	Front Oiler Assembly	10328	Motor Adaptor Flange
10310	Gear Assembly	10390	Rear Felt	10329	Gear Case Adaptor Flange
10311	Screw M2.6 x 3 Rd. Hd.	10391	Spring	10331	Motor Shaft
10313	Gear Retainer	10407	Motor Assembly 110 volts	10333	Screw 10-32 x 1 Button Hd. Socket Cap (Switch Box)
10315	Gear only	10408	Carbon Brush, each	10334	Grip
10320	Worm Assembly	10409	Motor Assembly 220 volts	10336	Motor Shaft Housing Assembly
10324	Rollpin 2 x 10	10410	Motor Case	10352	Screw 10-32 x 3/16 Socket Set, Cone Pnt. (Flanges)
10325	Retaining Ring	10411	Switch Lever	10361	Switch Box
10339	Cutting Guide Assembly	10414	Holder only	10362	Switch Box Bracket
10340	Cutting Guide w/Blade	10415	Clip	10407A	Motor Assembly 110 Volts
10341	Counter-Cutting Blade	10416	Switch	10409A	Motor Assembly 220 Volts
10345	Baseplate	10418	Brush Cap	10428A	Coupling
10346	Screw M2.6 x 3 Pan Hd.	10419	Sheath	10717A	Switch
10347	Screw M 3 x 6 Pan Hd.	10420	Screw 4 x 5/16 Pan Hd.	824T	Screw 6-32 x 3/8 Socket Hd. Cap (Switch Box Bracket)
10348	Cutting Guide only	10423	Screw M3 x 8 Flat Hd.		
10349	Clamp (not shown)	10425	Spring		
10370	Sharpener Assembly	10426	Screw M3 x 4 Fil. Hd.		
		10428	Shaft Coupling		
		10433	Knife Lock Screw		

H. MAIMIN CO., Inc.

P.O. Box 549 (Route 341) Kent, Ct. 06757, U.S.A.



THE CUTTER'S EDGE

Maimin Technology
2915 Courtyards Drive, Bldg. B, Norcross, GA. 30071
Tel: 770-447-1800 Fax: 770-447-1070 USA: 800-243-4645

**SUPPLEMENT PARTS SHEET FOR ALL TYPES
MINISHERE
WITH SERIAL NUMBER SERIES M1/M2-30000 OR GREATER**

Part Number	Replaces Part Number	Description
23226	10304	Screw, 6-32 x ¼ Socket Head Cap
10400	10407	Motor Assembly 110V
10401	10408	Carbon Brush, Each
10402	10409	Motor Assembly, 220V
10413	10418	Brush Cap
10421	10444	Screw, 3-48 x 1¼ Fil. Hd.

STRETCH MINISHERE ONLY

Part Number	Replaces Part Number	Description
10336D	10336	Flexible Shaft & Housing Assembly
10407B	10407A	Motor Assembly, 110V
10409B	10409A	Motor Assembly, 220V
23226	824T	Screw, 6-32 x ¼ Socket Head Cap